

RESPONSE OF CELL TO INJURY

- **Left ventricle**
- **The left ventricle shows circumferential abnormal increase in myocardial thickness caused by chronically increased workload on the heart.**



- **Concentric hypertrophy of left ventricle**

- Uterus

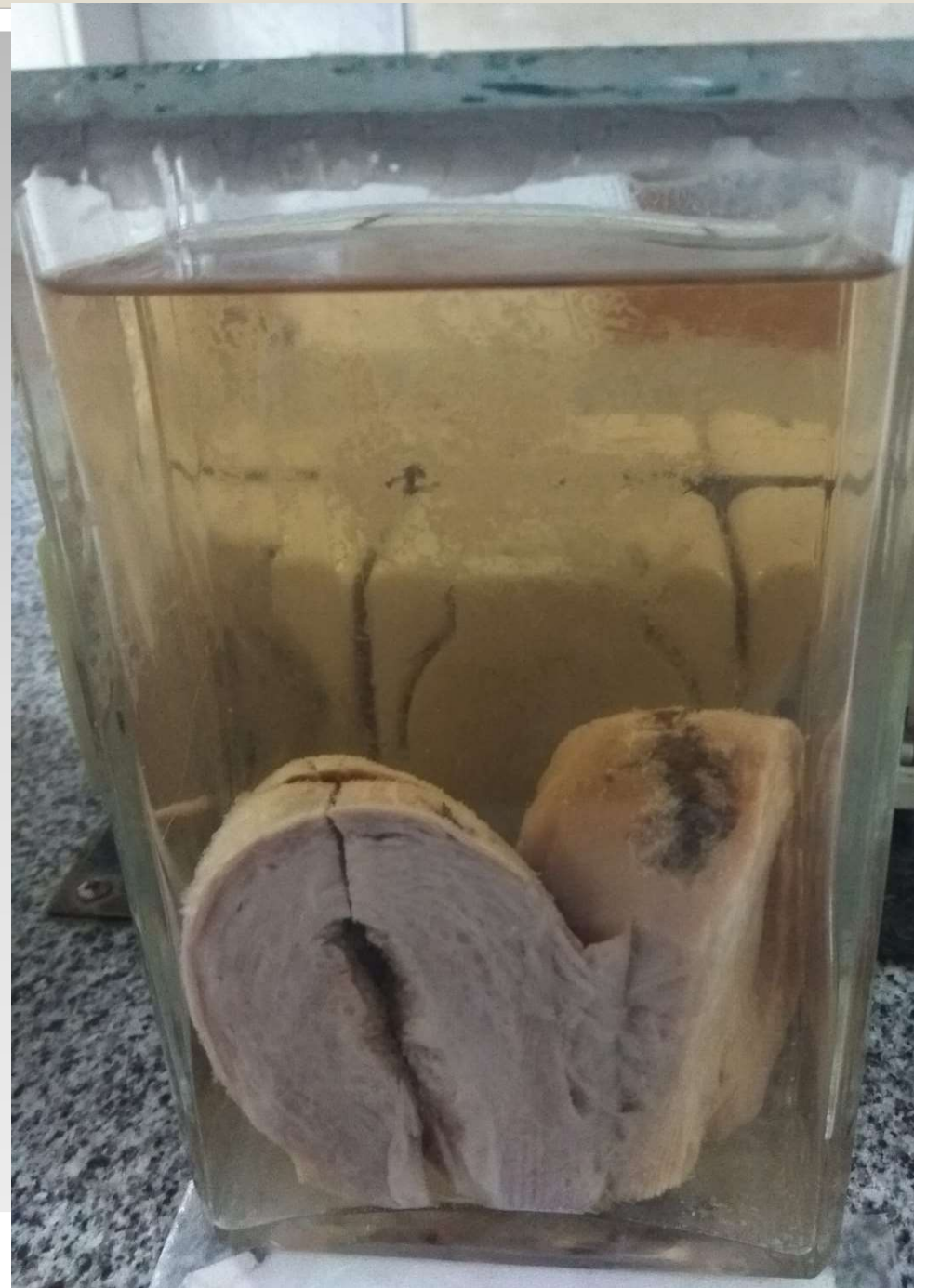
- The uterus shows an increase in its inner lining (endometrium) thickness narrowing its lumen.

Thick endometrium

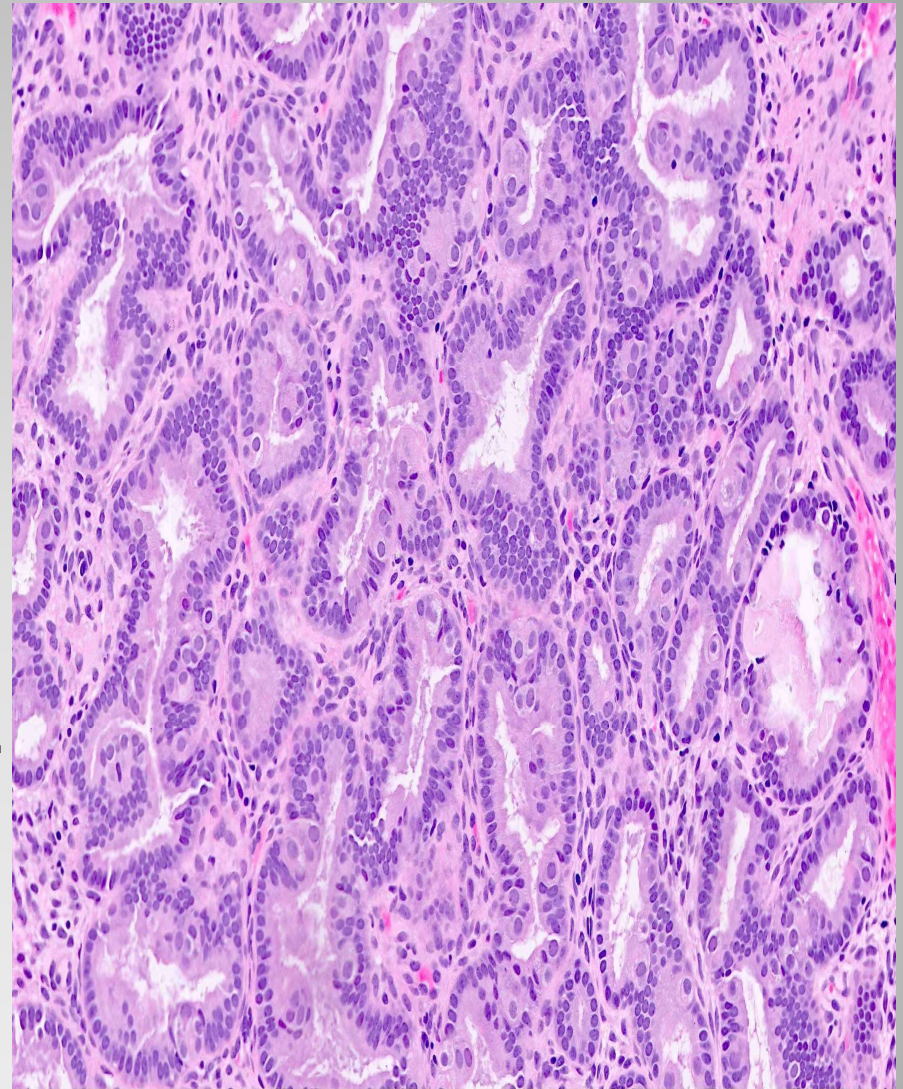


- **Endometrial hypertrophy/hyperplasia:**

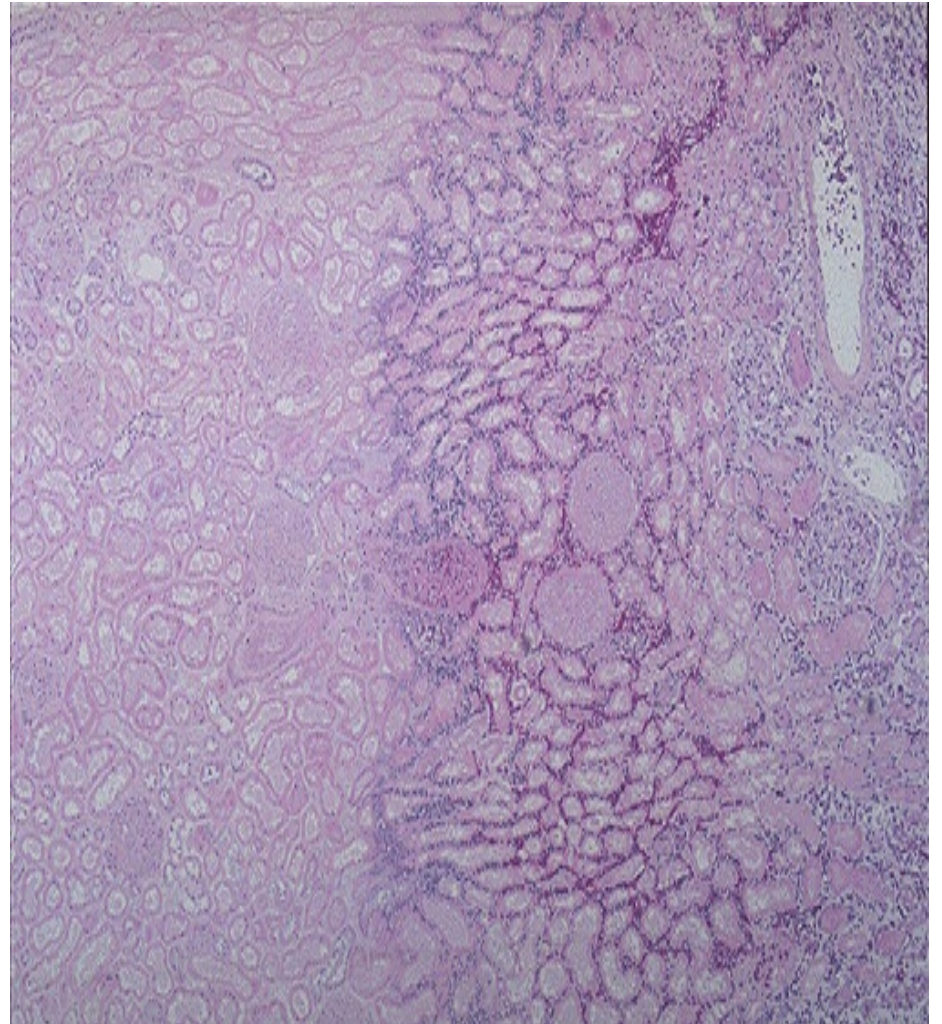
Endometrial hypertrophy/hyperplasia



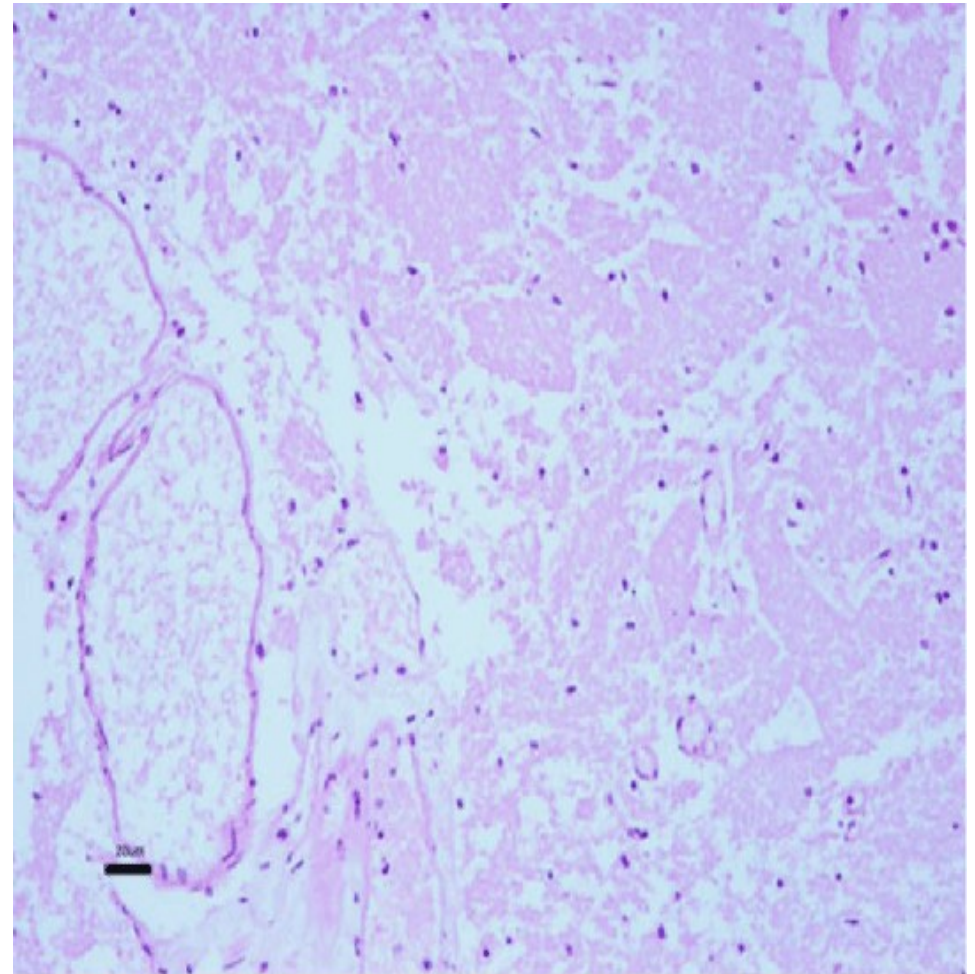
- Uterus
- The uterine glands show increase in number (increased gland/stroma ratio), lined by many hyperplastic endometrial columnar cells.
- Endometrial hyperplasia



- Kidney
- Part of kidney shows an area of necrotic tissue showing loss of cellular details with preserved architectural outline.
- Coagulative necrosis, kidney.



- Brain
- Brain shows widespread pink structureless material without any cellular or architectural details.
- Liquifactive necrosis, brain.





Test yourself



