

**Intracellular
accumulation &
Extracellular
Depositions**

Tortuous coronaries

- Heart
- The heart shows:
 - Shrunken size.
 - The myocardium is dark brown in color.
 - The pericardium shows serous atrophy of the fat.
 - The coronaries are tortuous.



- **Brown atrophy of the heart:**

BROWN ATROPHY, HEART

Aorta



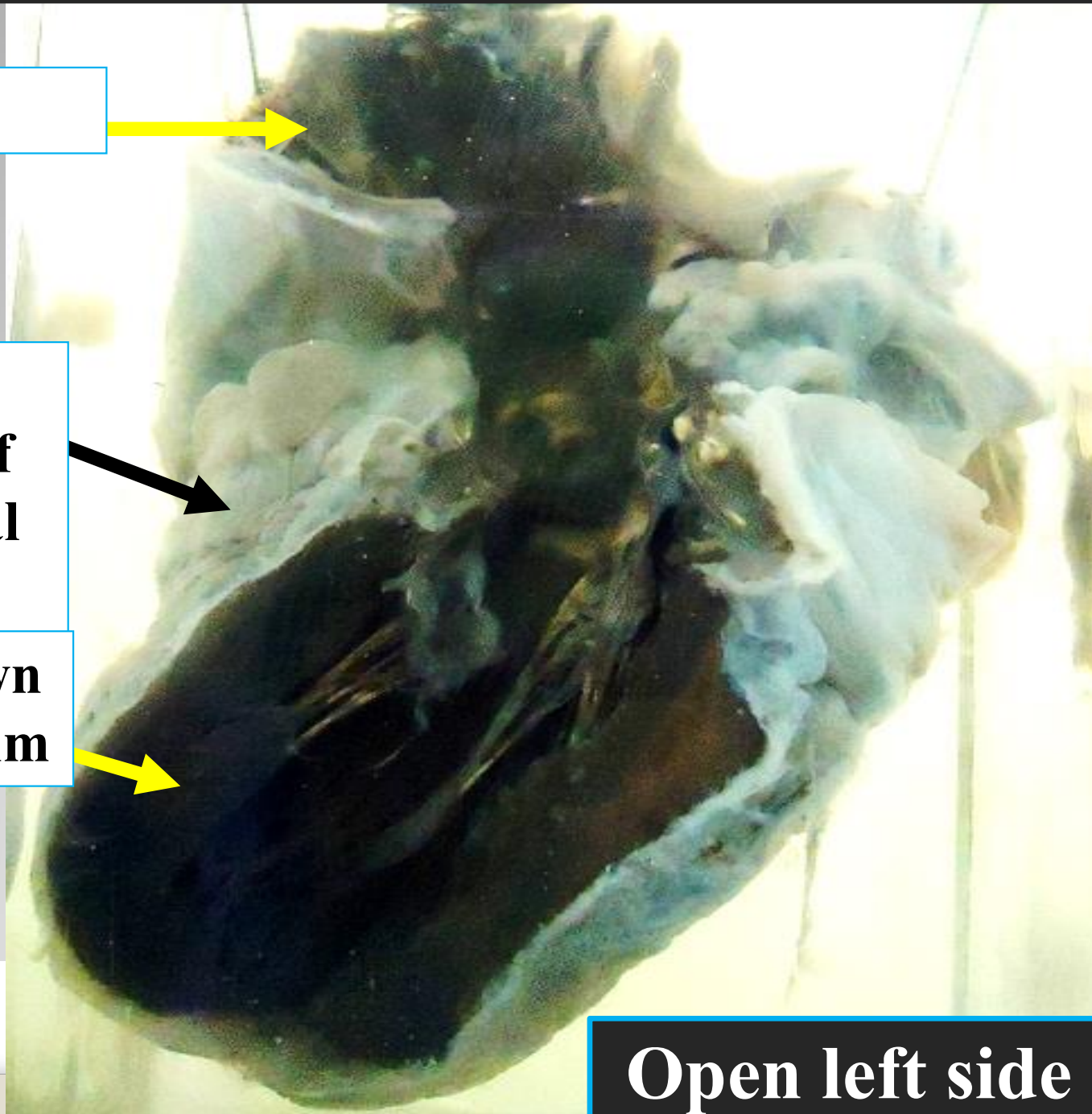
**Serous
atrophy of
pericardial
fat**



**Deep brown
myocardium**

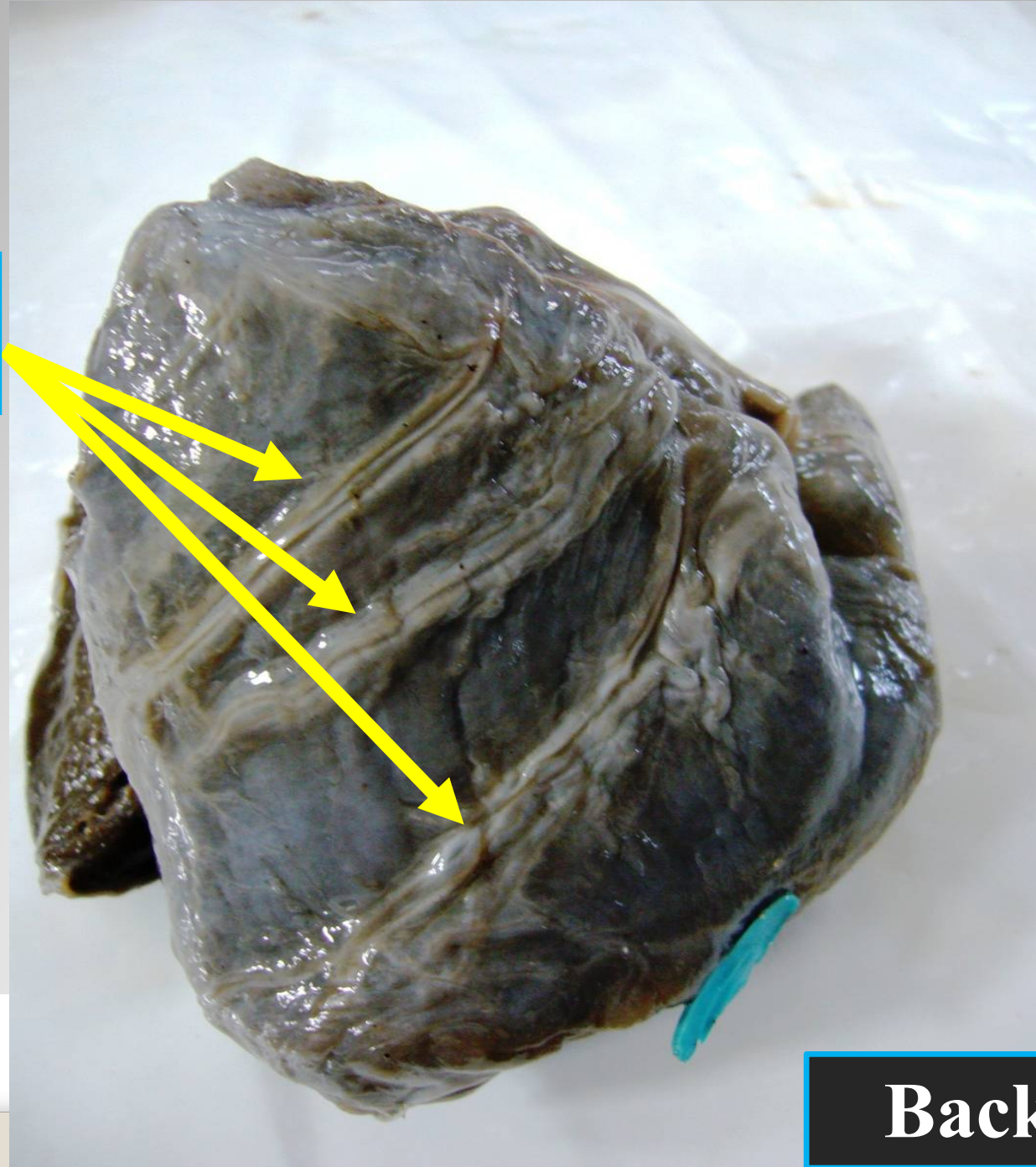


Open left side of heart



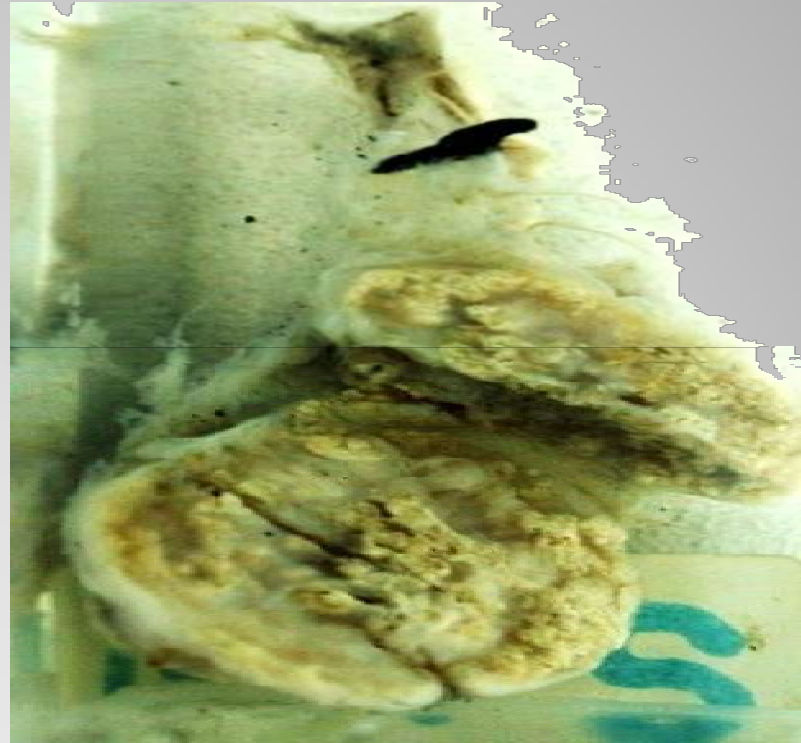
BROWN ATROPHY, HEART

**Tortuous
coronaries**



Back of jar

- Fibroma tumor
- Cut section of the tumor shows coarse, hard, chalky white calcium deposits.



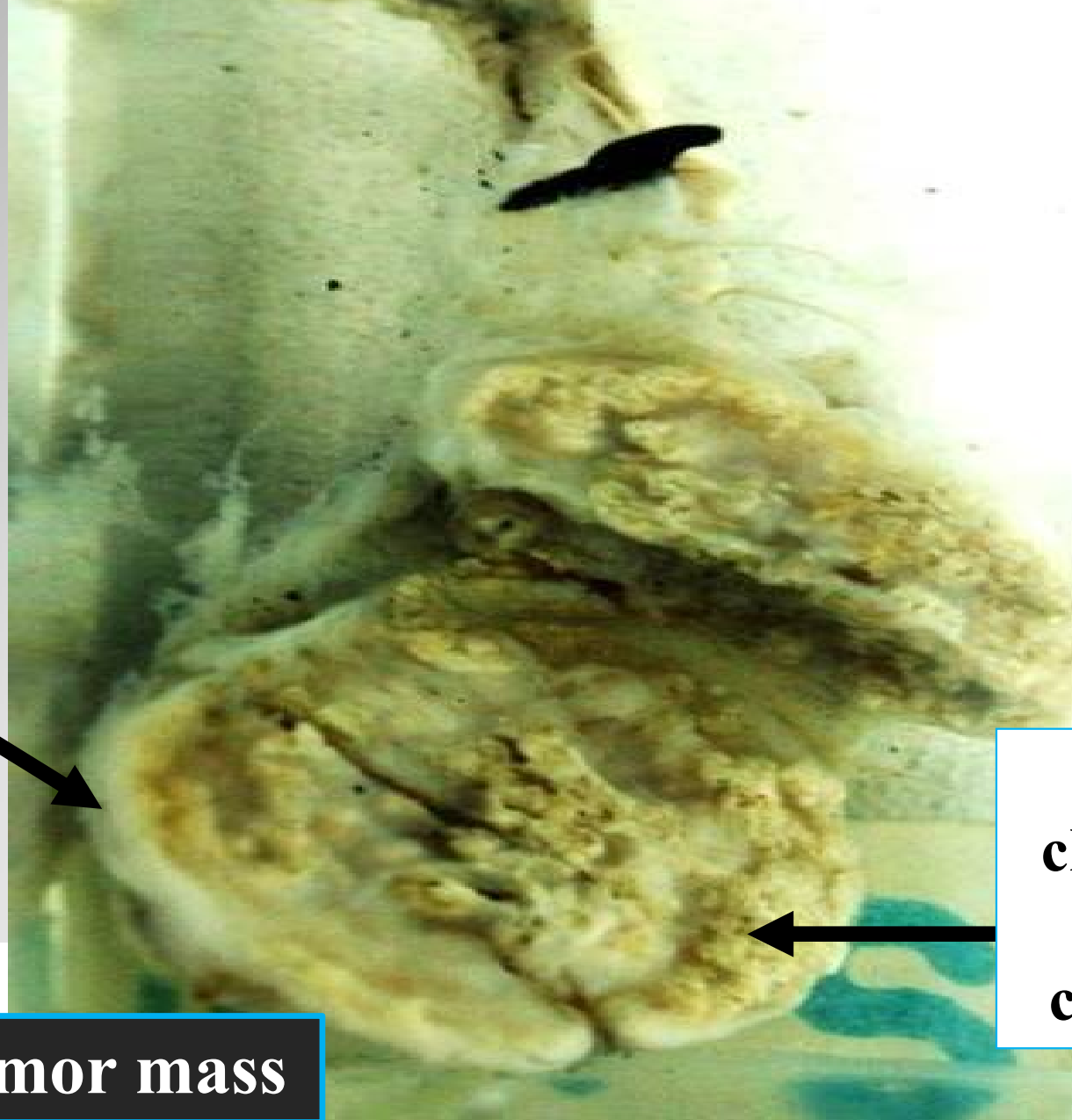
- **Dystrophic calcification of fibroma tumor**

DYSTROPHIC CALCIFICATION

**Fibrous
capsule of
tumor**

**Granular
chalky white
foci of
calcification**

Sectioned tumor mass

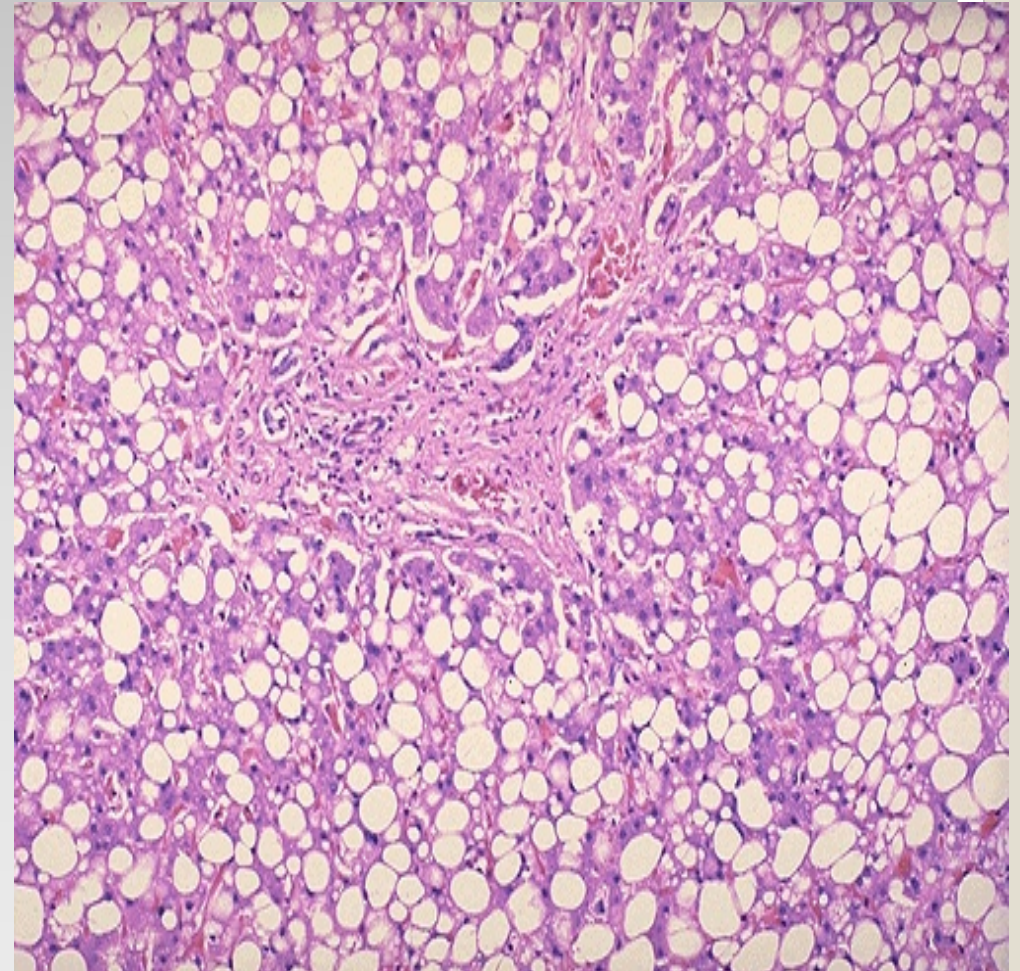


- Liver
- Liver shows:
 - Enlarged size
 - Borders are round with bulging surface (soft consistency).
 - c/s is soft yellow.



- **Steatosis liver**

- Liver
- Hepatocytes are enlarged with intracytoplasmic clear vacuoles pushing nucleus to one side (signet ring appearance).



- **Steatosis liver**

- Liver
- Liver shows:
 - Enlarged size.
 - Sharp borders and flat surface (firm consistency).
 - c/s shows pale grey waxy deposits.



- **Amyloidosis liver**



Test yourself

Fatty
change liver

Signet ring
cell

