

INFLAMMATION

- Lung
- Cut section shows 2 apical cavities with irregular yellowish lining (acute abscess).
- The lower lobe shows a bilocular cavity with shreddy blackish lining (gangrene).
- The pleura is dull, thick, opaque and greyish white.
- Acute lung abscess with gangrene and fibrinous pleurisy.

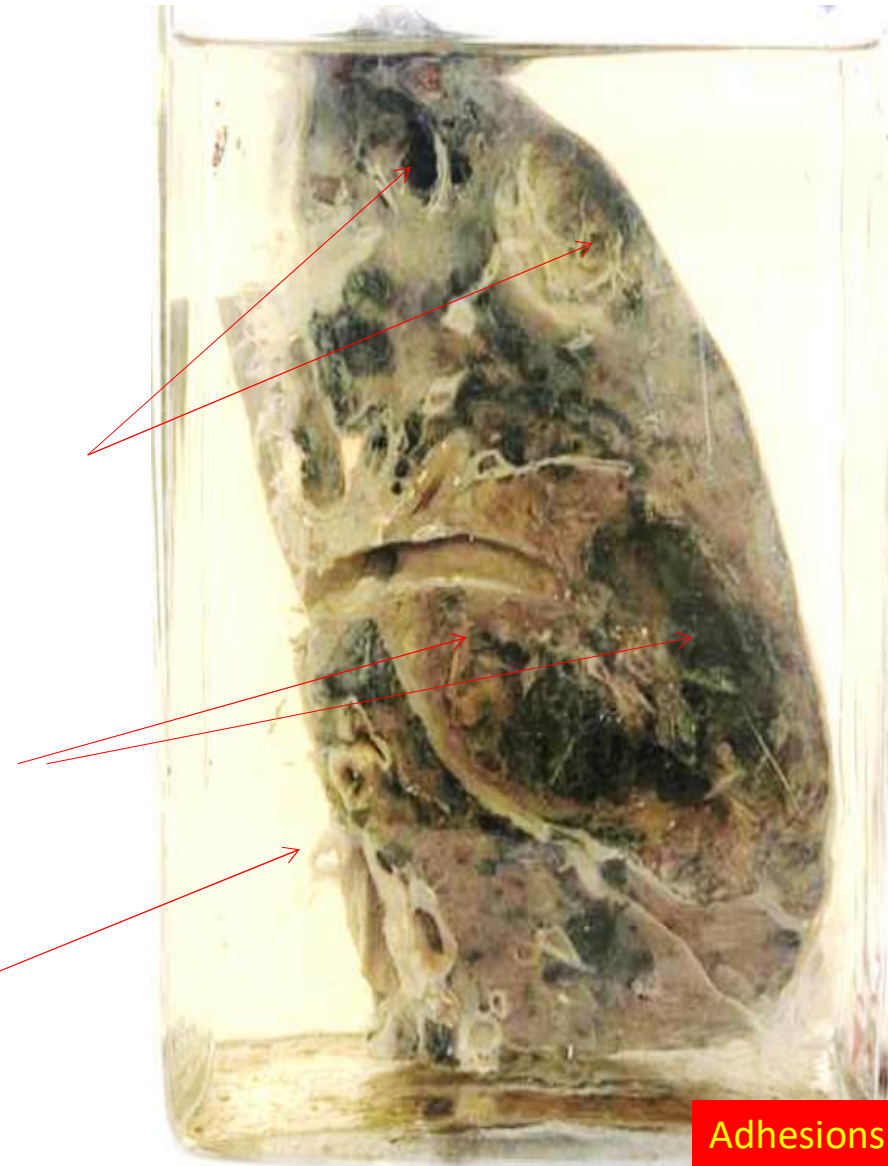


**R 41-7 : Acute lung abscess  
& gangrene.**

**Acute abscesses**

**Gangrenous cavity**

**Fibrinous pleurisy**



**Adhesions**

- Appendix
- The outer serosal surface shows yellow purulent discoloration.
- There is a site of perforation seen.
- The appendicular wall is edematous covered by yellow purulent pus.
- Acute diffuse suppurative appendicitis.



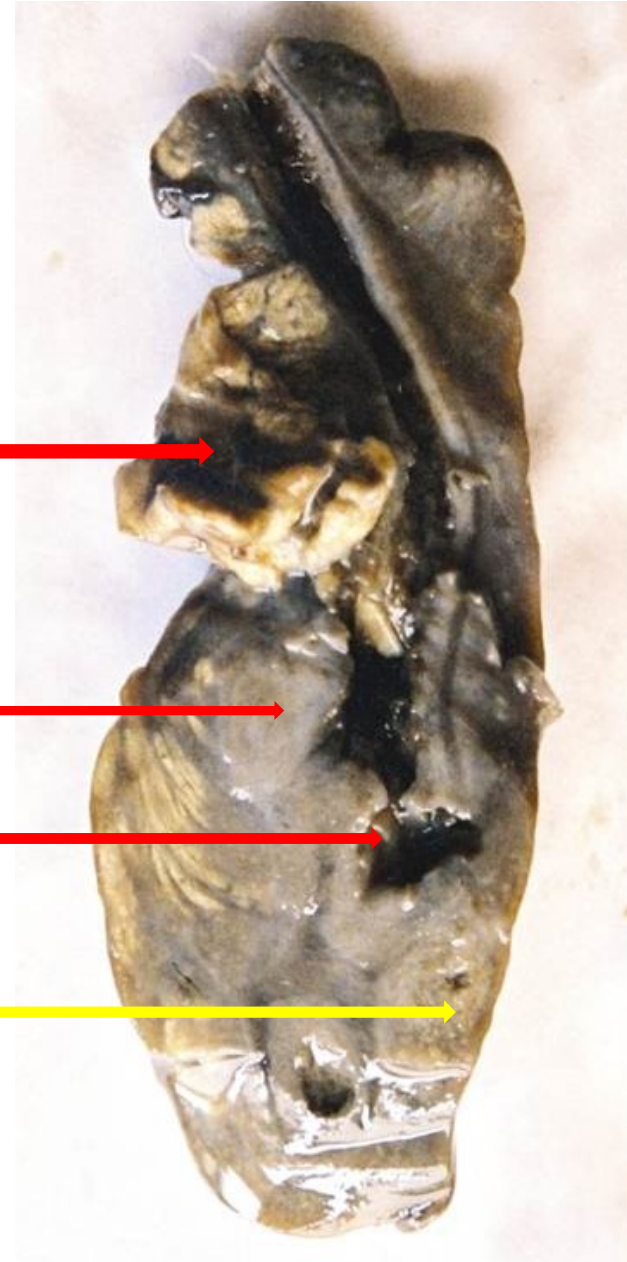
**Acute suppurative appendicitis  
with perforation**

**Omentum**

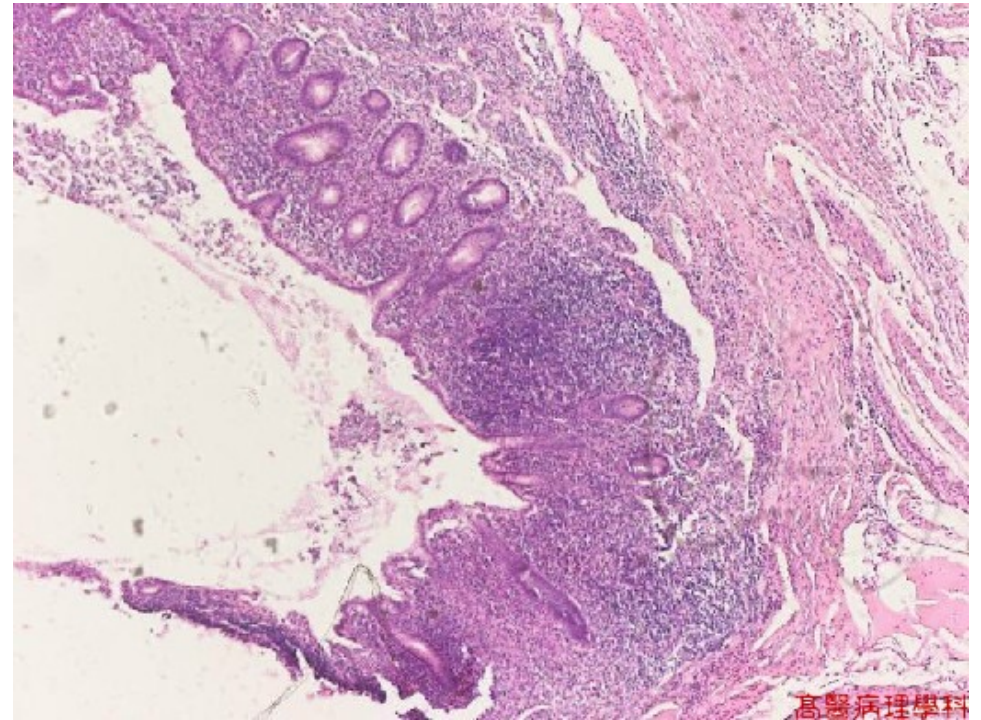
**Swollen wall**

**Perforation**

**Yellowish exudate  
on outer surface**

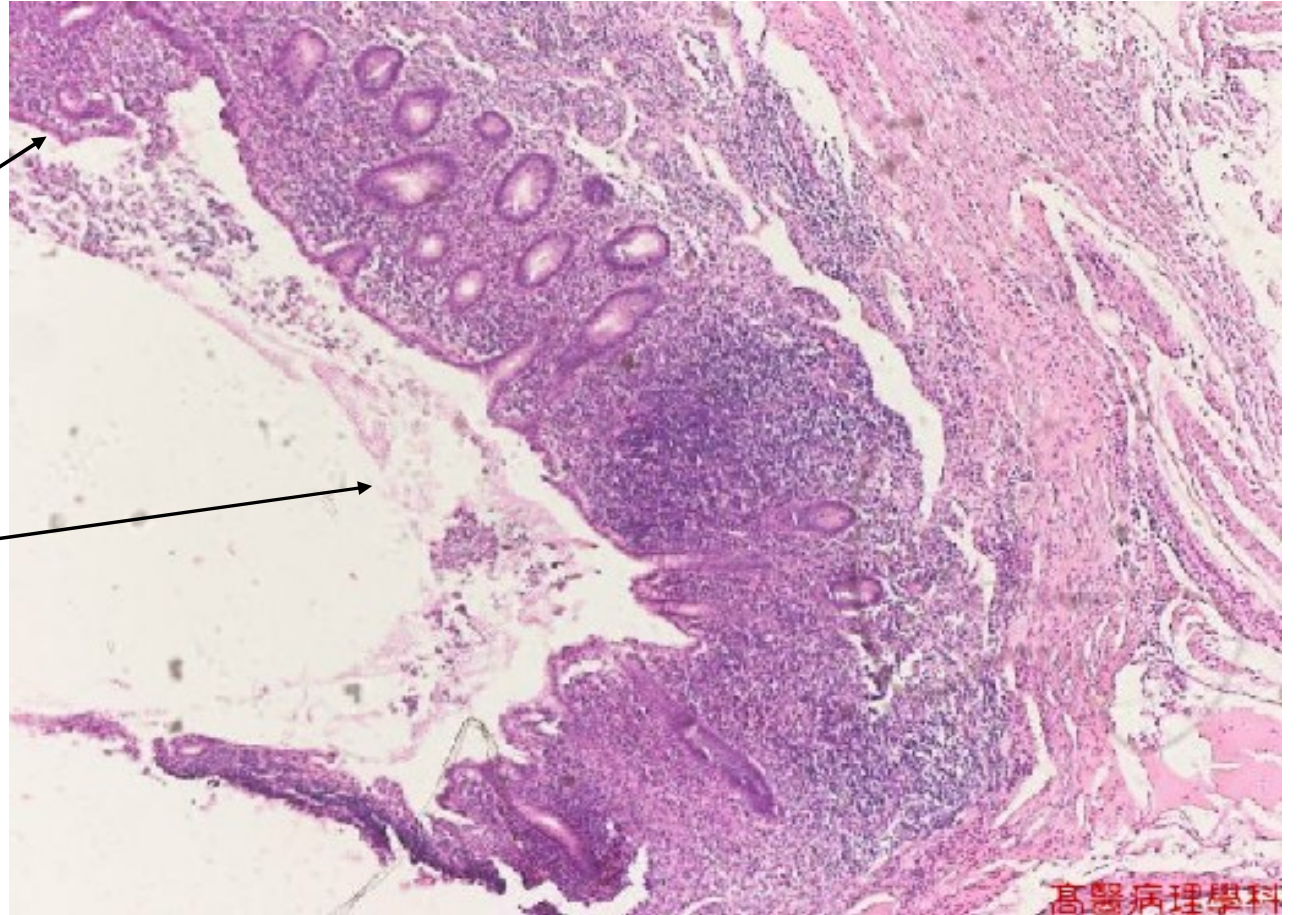


- Appendix
- The lumen is filled with pus
- The mucosa is focally ulcerated
- The wall is infiltrated by many polymorphs and macrophages with edema and dilated congested blood vessels.
- Acute diffuse suppurative appendicitis.



Ulcerated  
mucosa

pus



- Heart with pericardium.
- The heart is unopened.
- The covering pericardium is dull, thick, opaque and yellowish in color.
- Fibrinous pericarditis

**Yellow fibrin deposit**





- Lung
- Most of the lung tissue is replaced by a large cavity with thick, smooth greyish white lining (chronic abscess).
- The pleura is dull thick opaque and whitish in color.
- Chronic lung abscess with pleural fibrosis.



**Chronic lung abscess.**

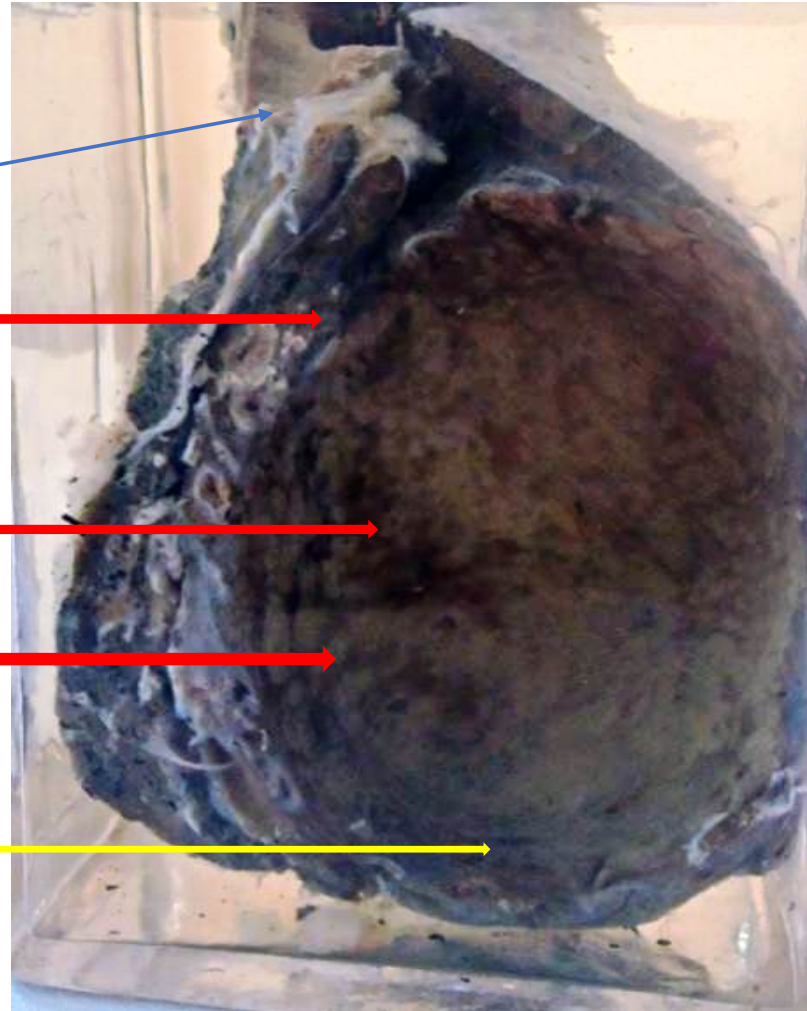
**Pleural fibrosis**

**Collapsed lung**

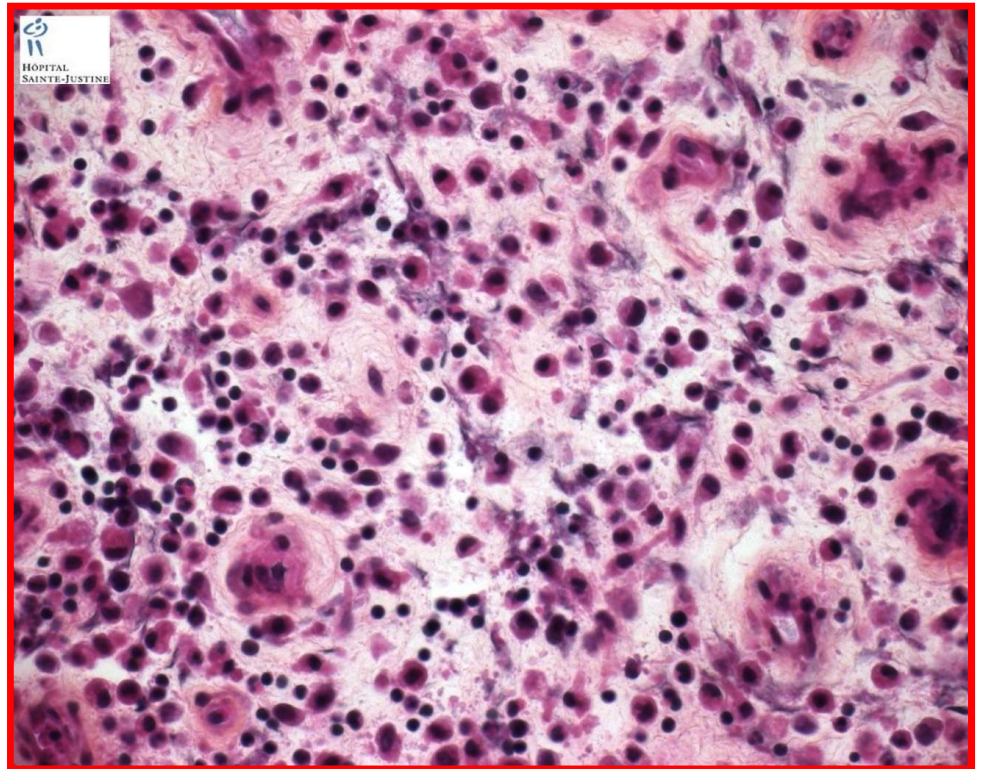
**Chronic lung abscess**

**Smooth yellow lining**

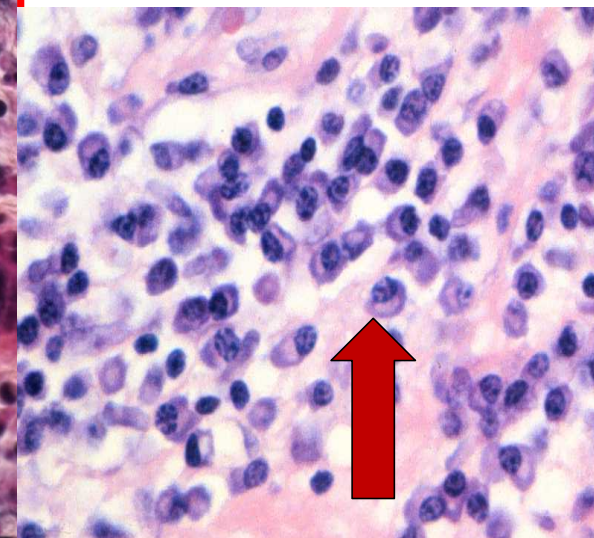
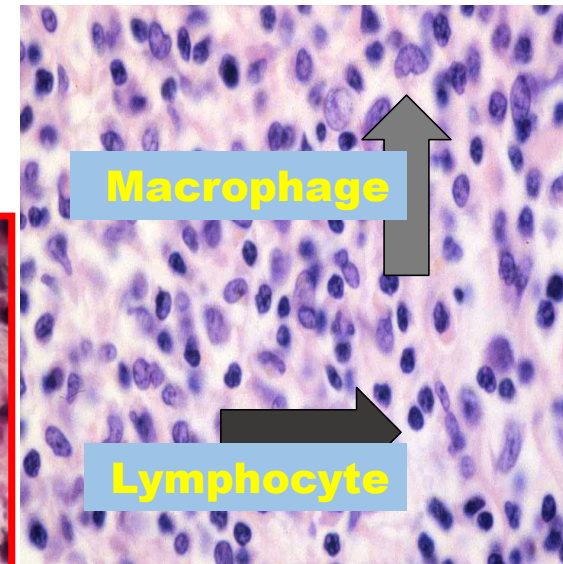
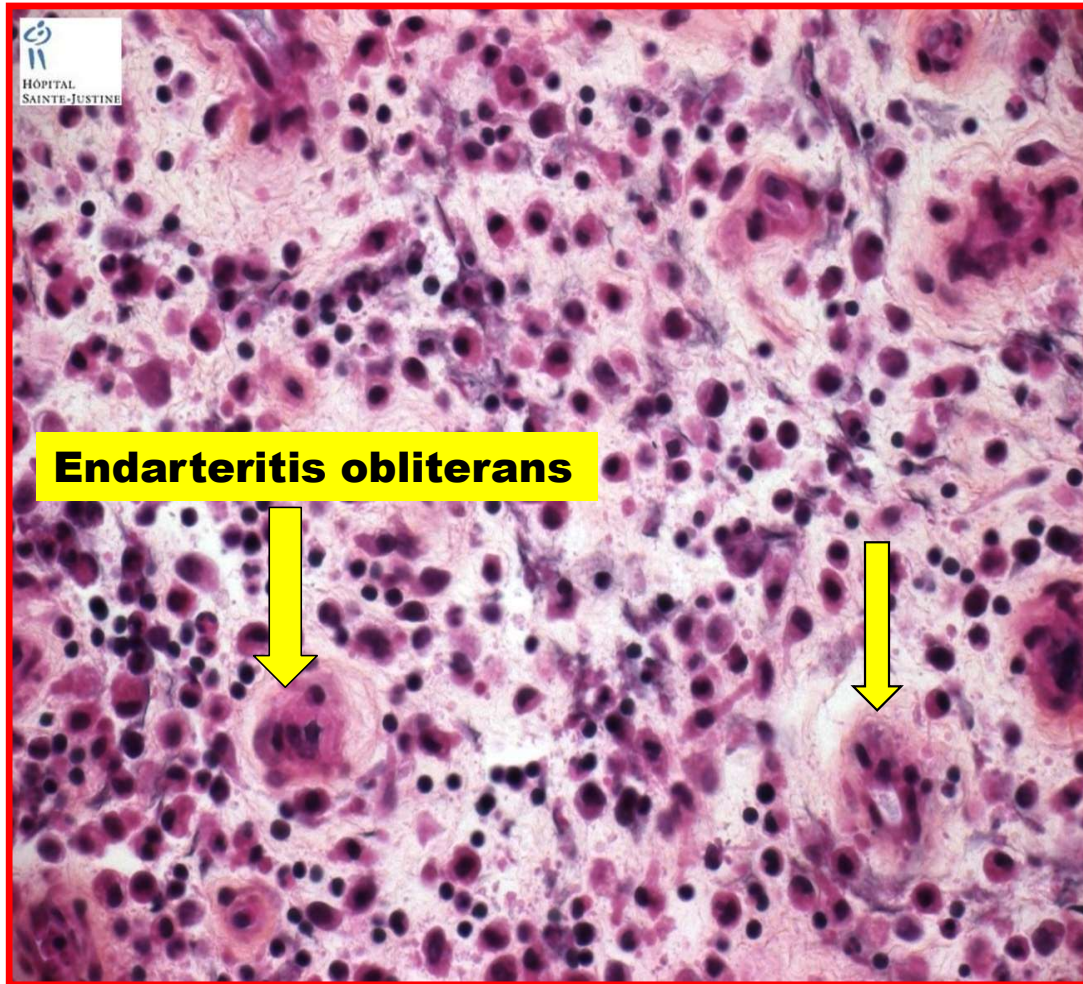
**Thick fibrous wall**



- Soft tissue
- The tissue is infiltrated by chronic inflammatory cells, lymphocytes, plasma cells and macrophages, with thick walled blood vessels (endarteritis obliterans) and fibrosis.
- Chronic inflammation soft tissue.



# Chronic inflammation .





**Test yourself**





