

Benign tumors

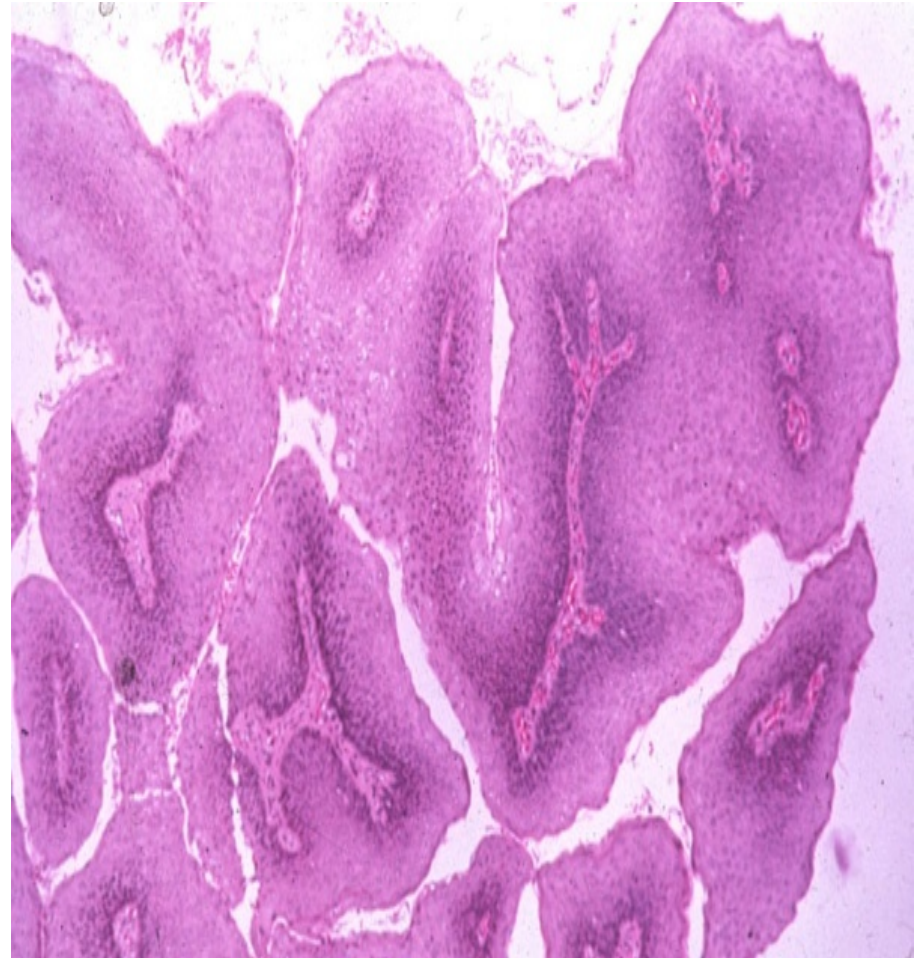
1. EPITHELIAL
2. MESENCHYMAL
3. OTHERS

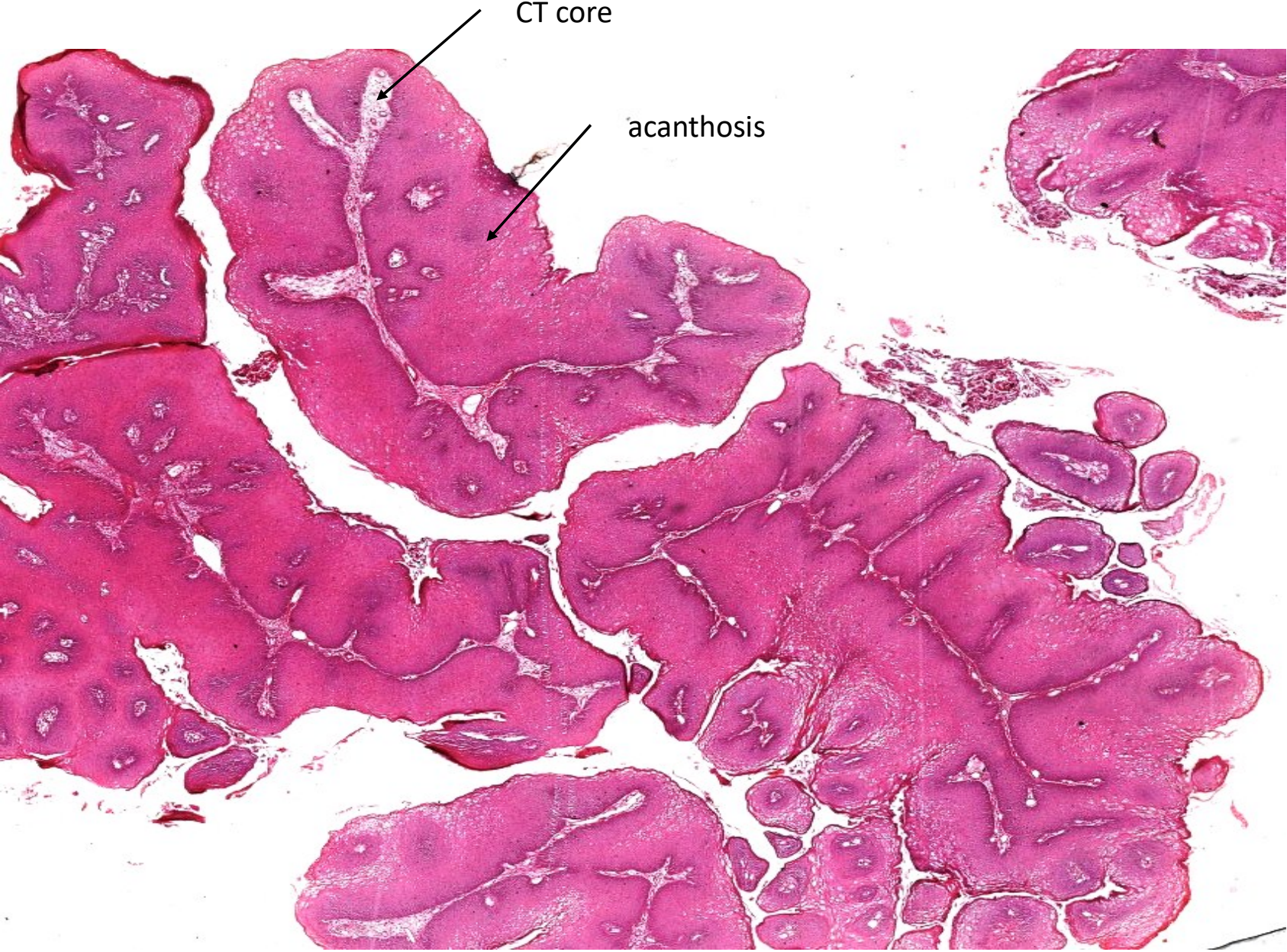
1- BENIGN EPITHELIAL TUMORS

- Skin
- The skin surface shows finger like projections covered by skin.
- Squamous cell papilloma



- Skin
- Skin shows finger like projections formed of vascular connective tissue core covered by multiple layers of hyperplastic benign squamous cells, acanthosis with hyperkeratinization.
- Squamous cell papilloma

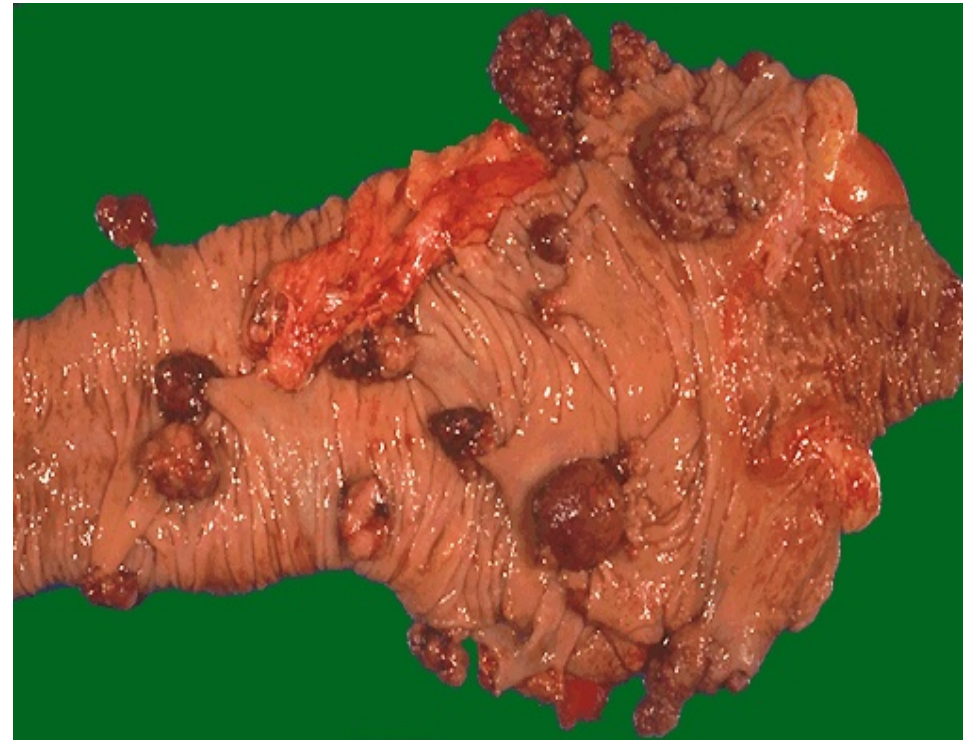




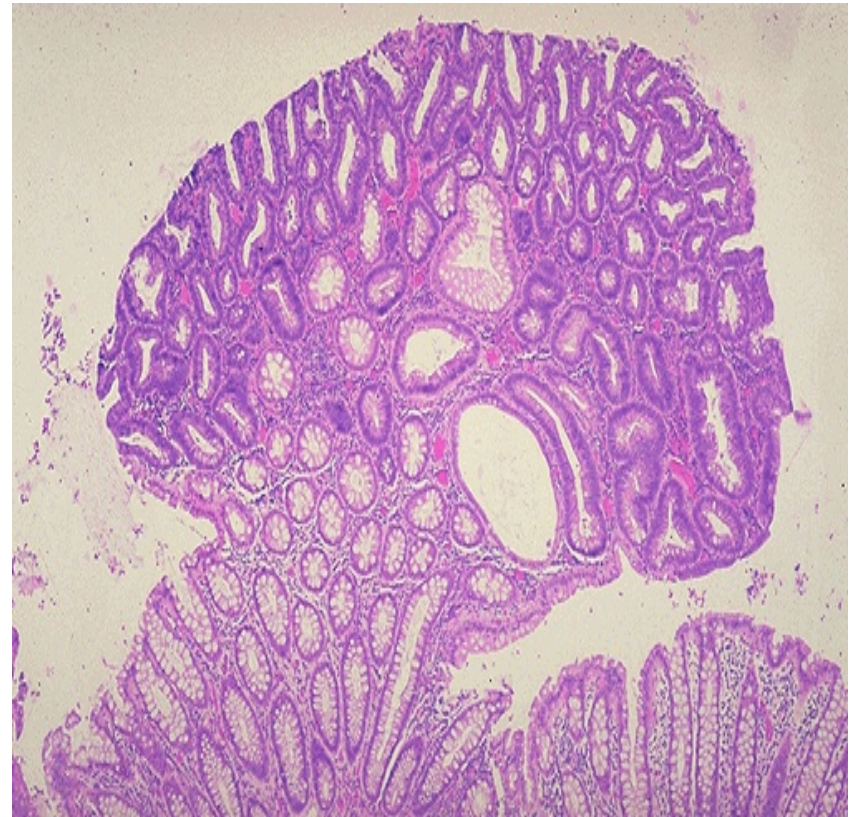
CT core

acanthosis

- Colon
- The colon shows multiple sessile and pedunculated mucosal polyps.
- Adenomatous polyp colon.



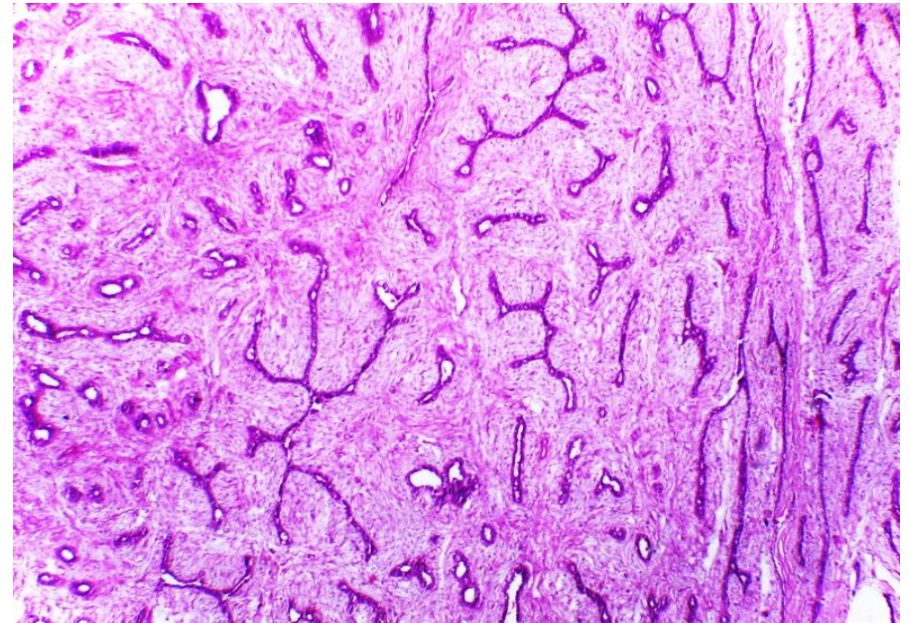
- Colon
- The mucosa shows a polypoid structure formed of hyperplastic glands separated by fibrous stroma.
- Note that the glands are crowded on top and appear darker in colour than the others due to the presence of dysplasia
- Adenomatous polyp colon.



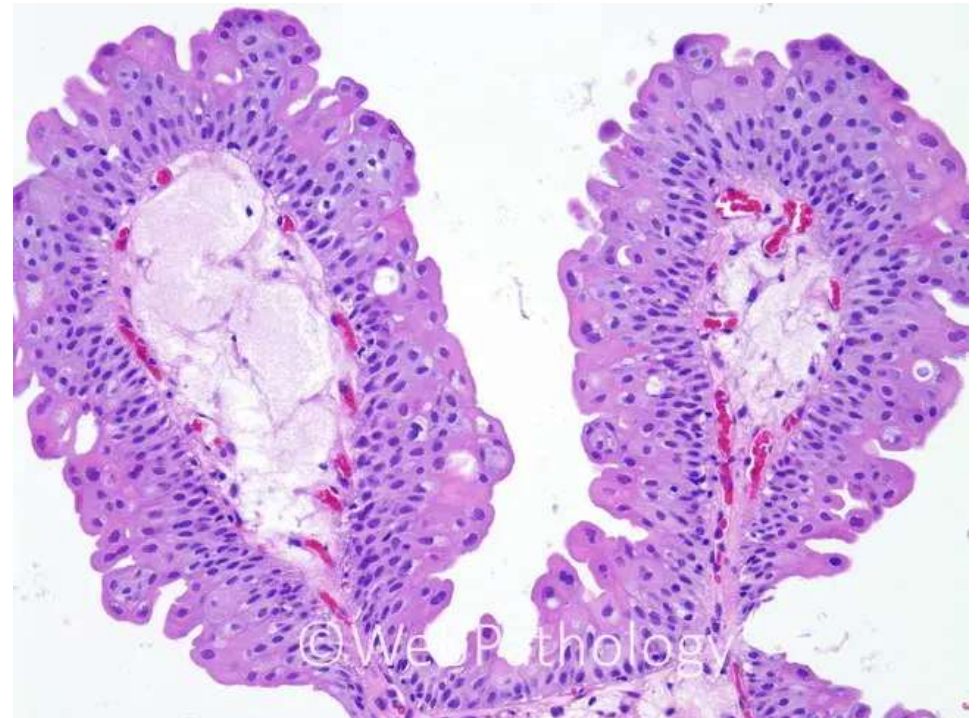
- Breast mass
- Breast shows a well defined capsulated mass with firm greyish c/s.
- Fibroadenoma, breast



- Breast mass
- A tumor formed of hyperplastic ducts and acini lined by benign cuboidal to columnar cells separated by excess fibrous stroma.
- Fibroadenoma, breast.

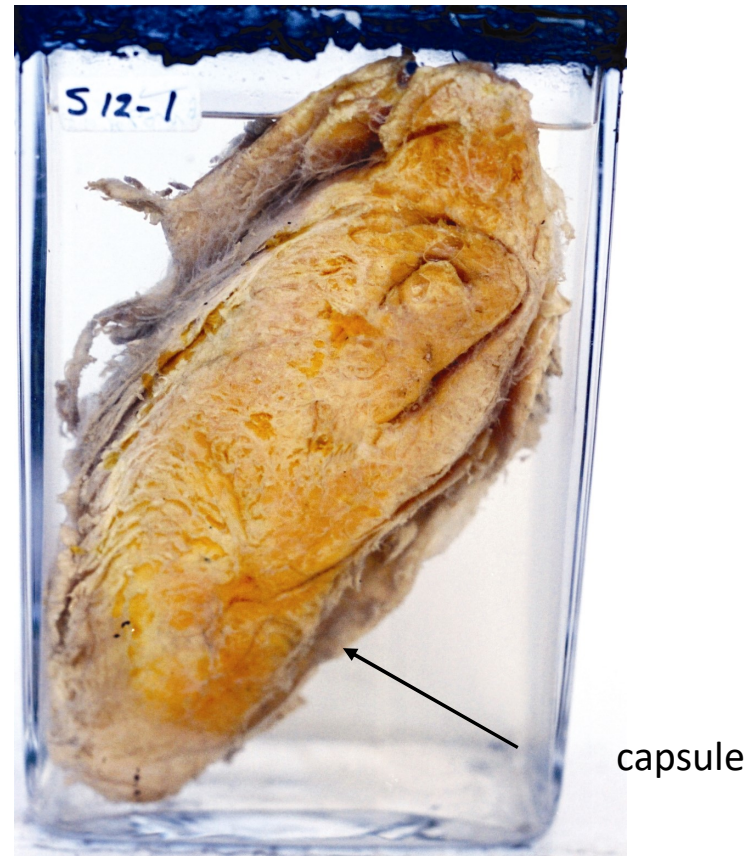


- Urinary bladder.
- The urinary bladder surface shows delicate finger like projections formed of vascular connective tissue core covered by few layers of regular transitional cells.
- Urothelial (transitional cell) papilloma



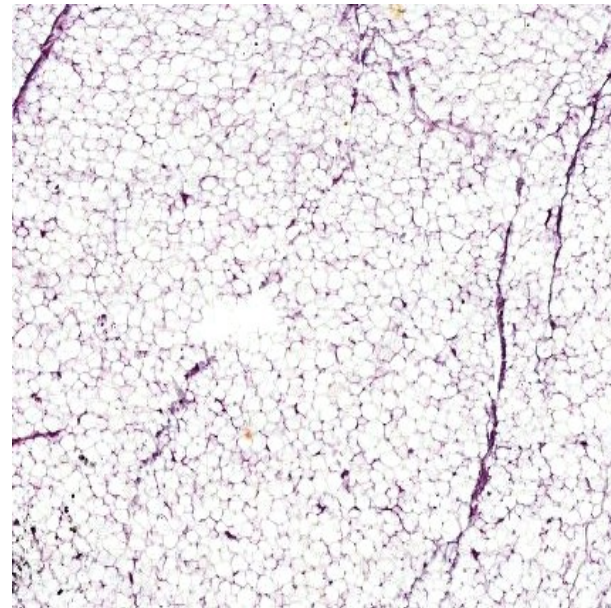
2- BENIGN MESENCHYMAL TUMORS

- Soft tissue mass
- The mass is well defined, capsulated with lobulated, soft yellow greasy C/S.
- Lipoma

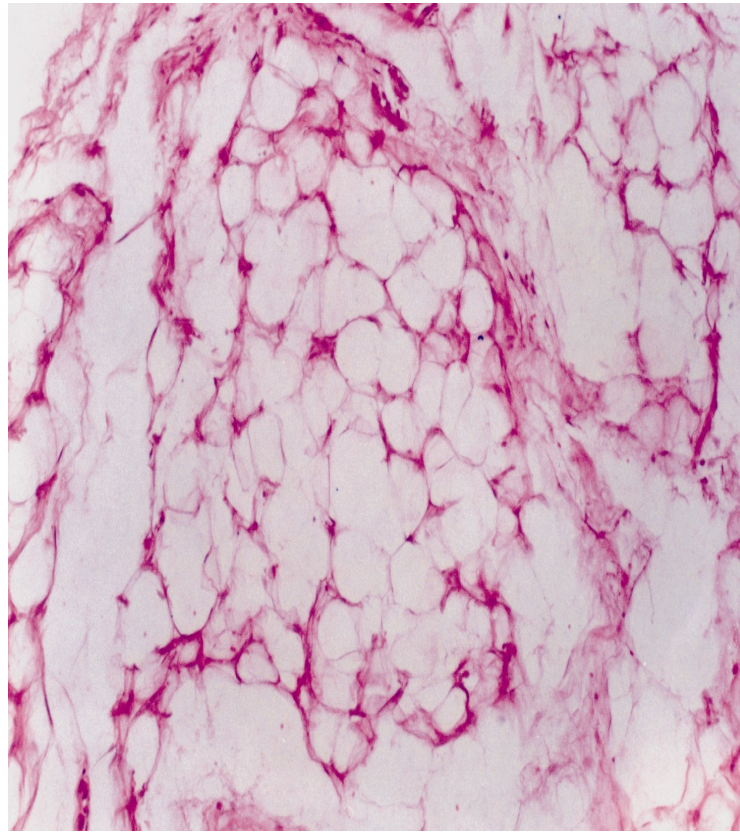


- Soft tissue mass
- The mass is formed of lobules of mature fat cells (adipocytes) separated by fibrous septa.
- Lipoma

26

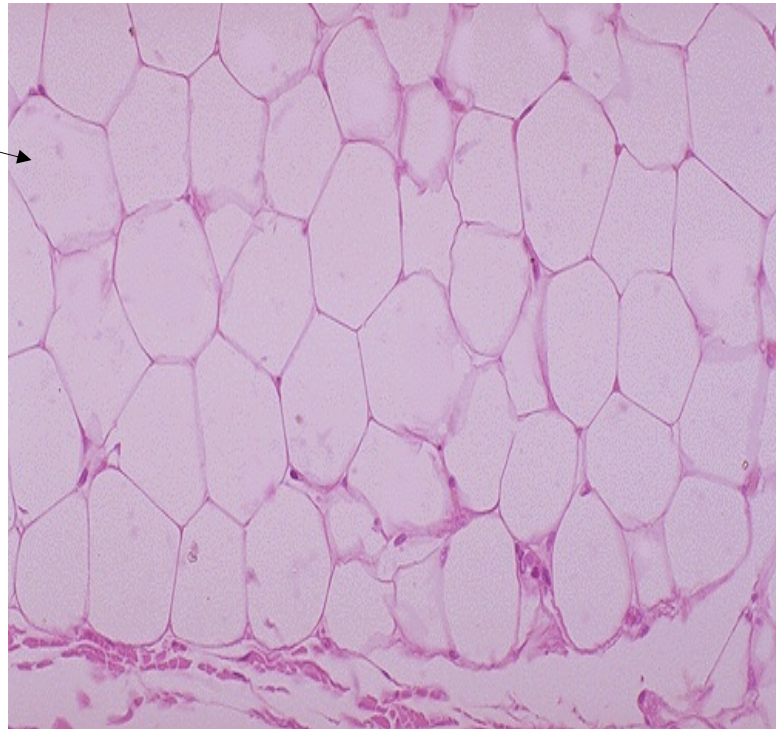


Lipoma

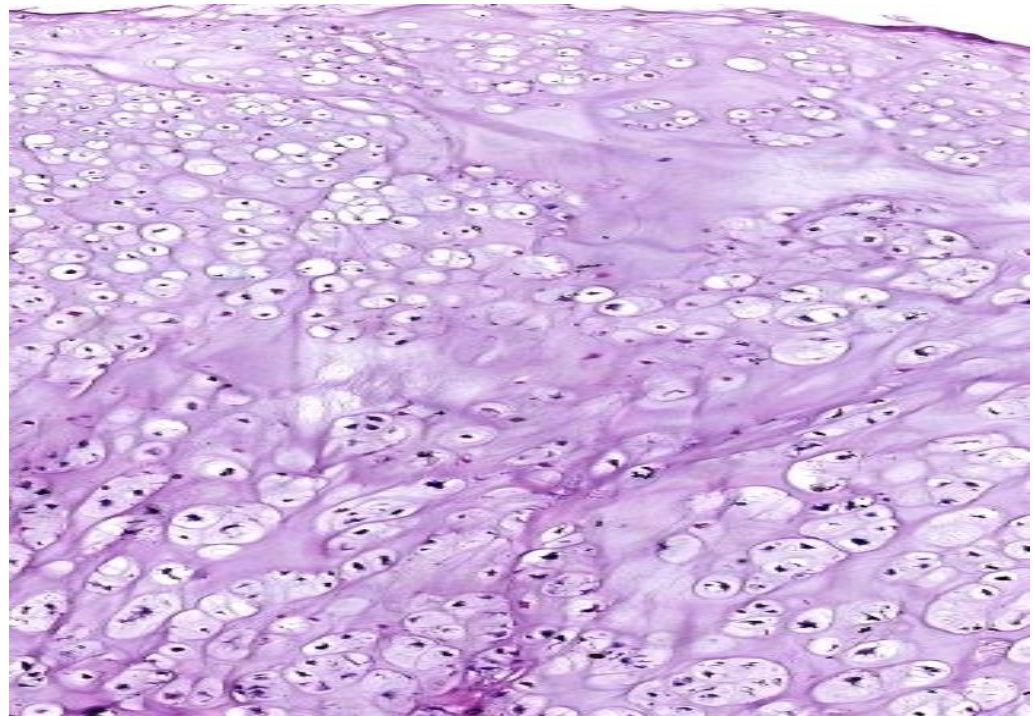


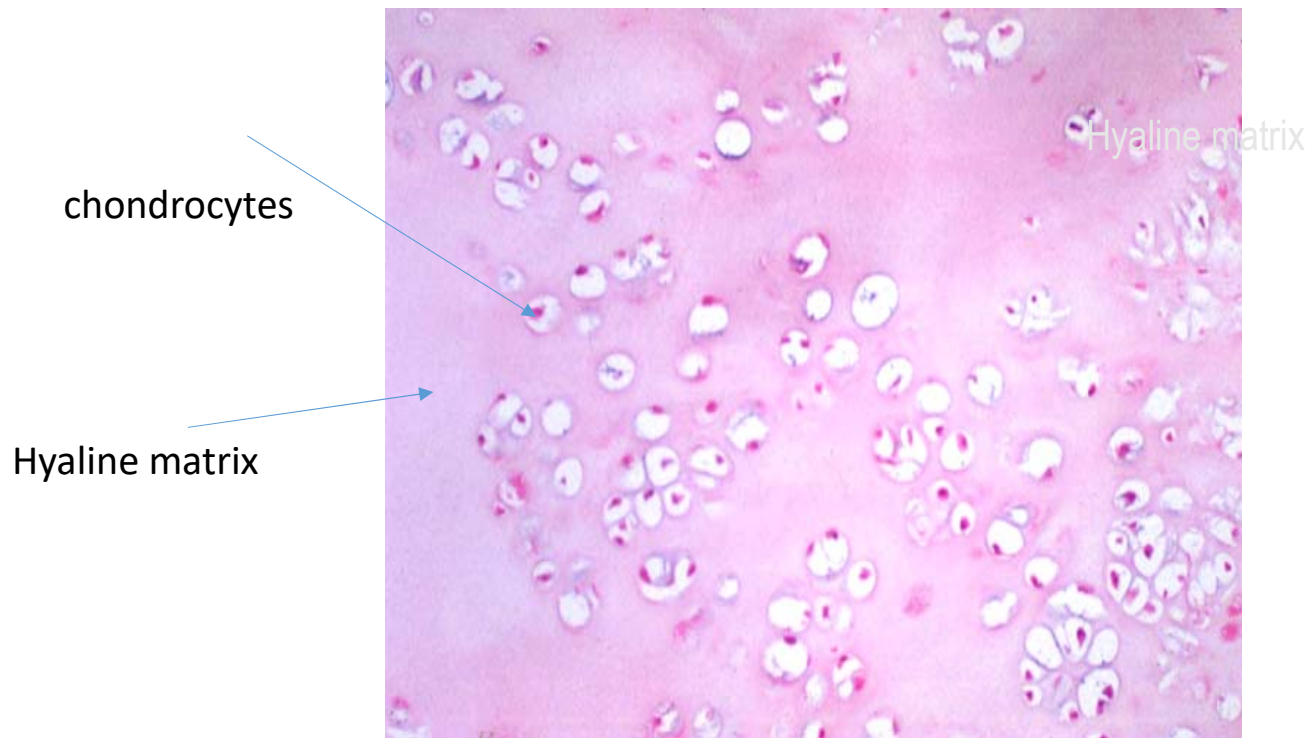
Lipoma

adipocytes



- Tumor
- A tumor formed of lobules of mature chondrocytes lying in lacunae within hyaline matrix.
- Chondroma





- Uterus
- The uterus shows multiple well defined non capsulated mass with firm whorly grey white C/S.
- Uterine leiomyoma (fibroid)



- Mass
- Well defined capsulated mass with firm grey white c/s
- Fibroma

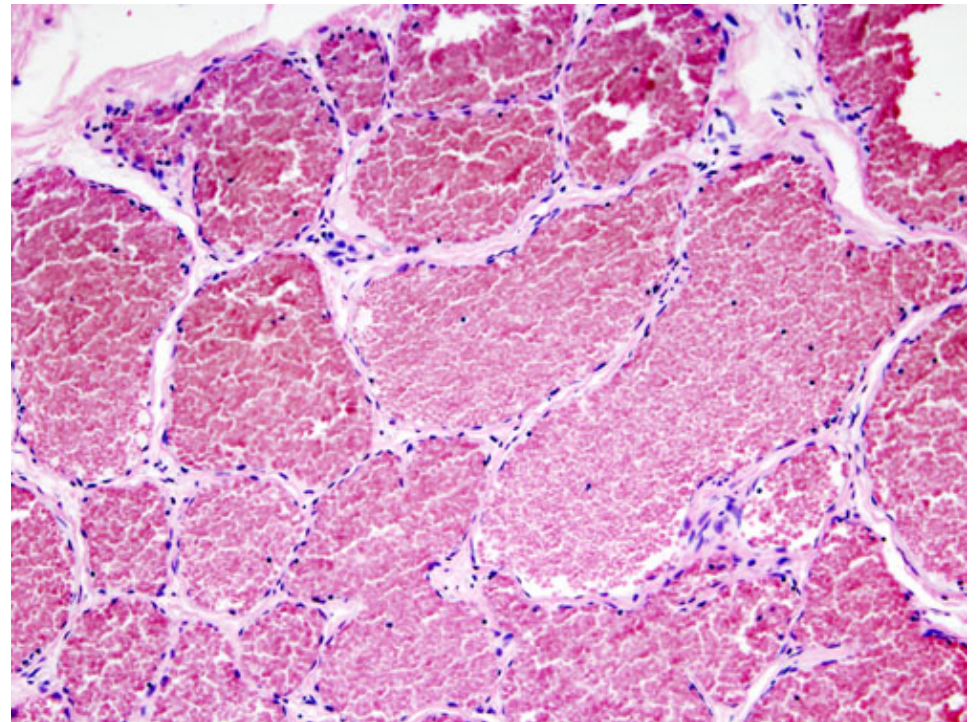
capsule



- Liver
- The liver shows a well defined non capsulated mass with soft dark brown c/s
- Cavernous hemangioma, liver



- Tumor
- Section in tumor formed of proliferated wide vascular spaces lined by benign endothelial cells and filled with excess blood
- Cavernous hemangioma



3- Benign miscellaneous tumors

- Cystic mass
- A cystic mass showing a dermoid ridge with hair tufts. Teeth are also seen.
- Benign cystic teratoma.







Test yourself



