

# MALIGNANT TUMORS

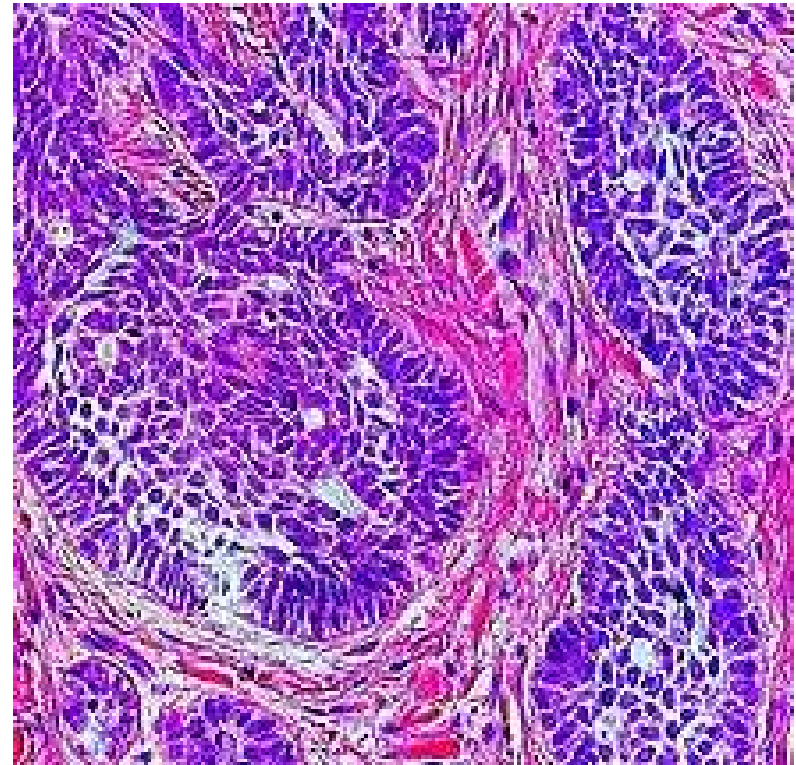
- 1- LOCALLY MALIGNANT TUMORS**
- 2- MALIGNANT EPITHELIAL TUMORS**
- 3- MALIGNANT MESENCHYMAL TUMORS**

# 1- Locally malignant tumors

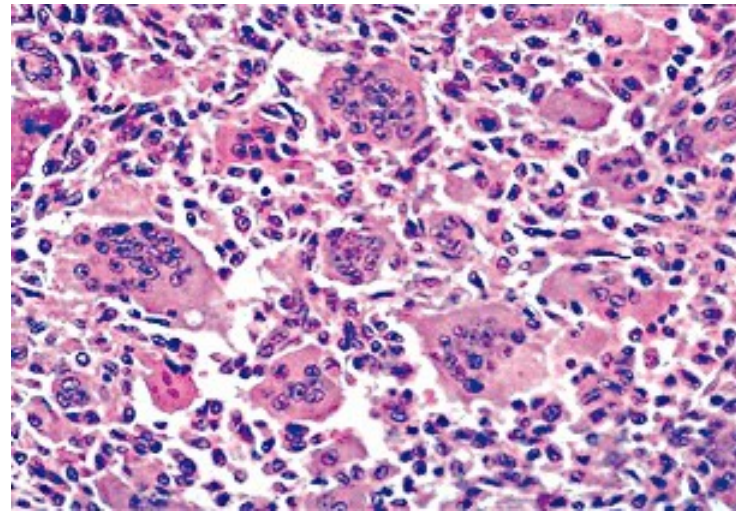
- Skin ulcer
- The skin shows an ulcer with beaded, rolled in, inverted edge, rough necrotic floor and indurated base.
- Basal cell carcinoma



- Skin mass
- Section in skin tumor formed of nests and masses of blue, basaloid cells with peripheral palisading columnar cells and central polyhedral cells.
- Basal cell carcinoma



- Bone mass
- Section in tumor formed of non neoplastic multinucleated osteoclast like giant cells and neoplastic spindle cells.
- Osteoclastoma (giant cell tumor)

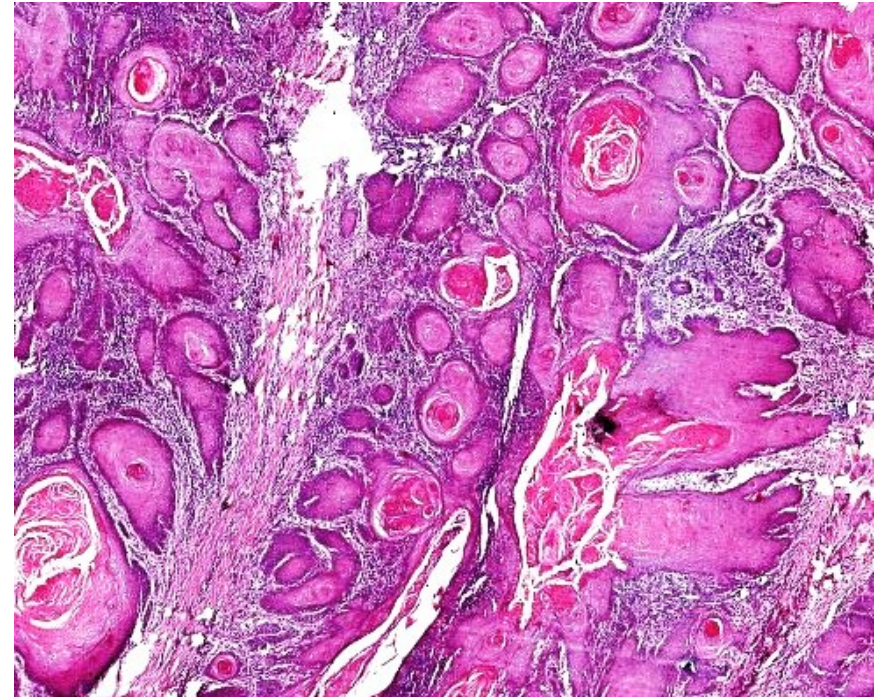


# Malignant epithelial tumors

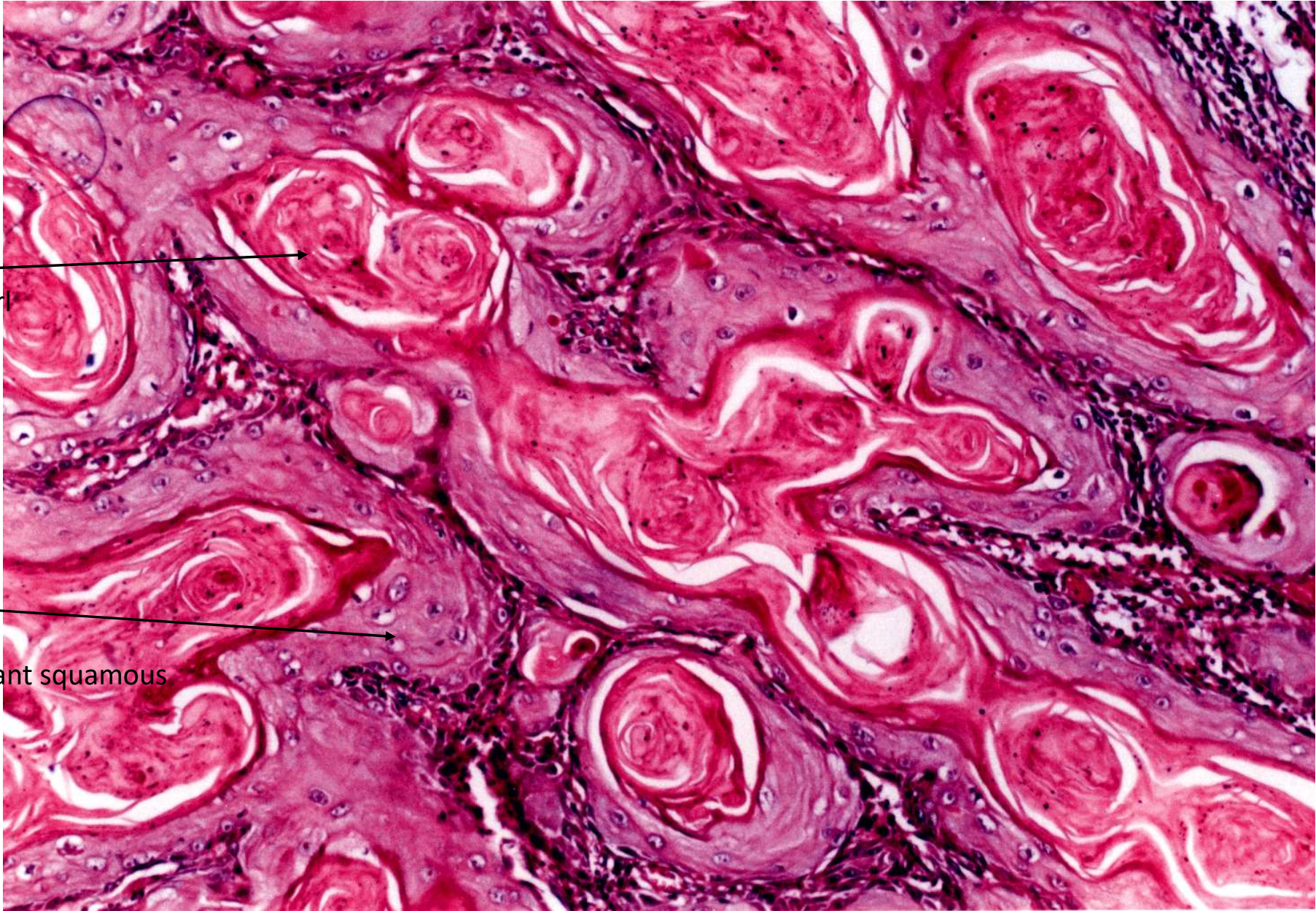
- Hand
- The hand shows a malignant ulcer with raised everted edge, rough necrotic floor and indurated base.
- Ulcerative (squamous cell) carcinoma, hand



- Skin mass
- Section in skin showing a malignant tumor formed of irregular nests and masses of pinkish malignant squamous cells with central keratinization forming keratin pearls.
- Squamous cell carcinoma







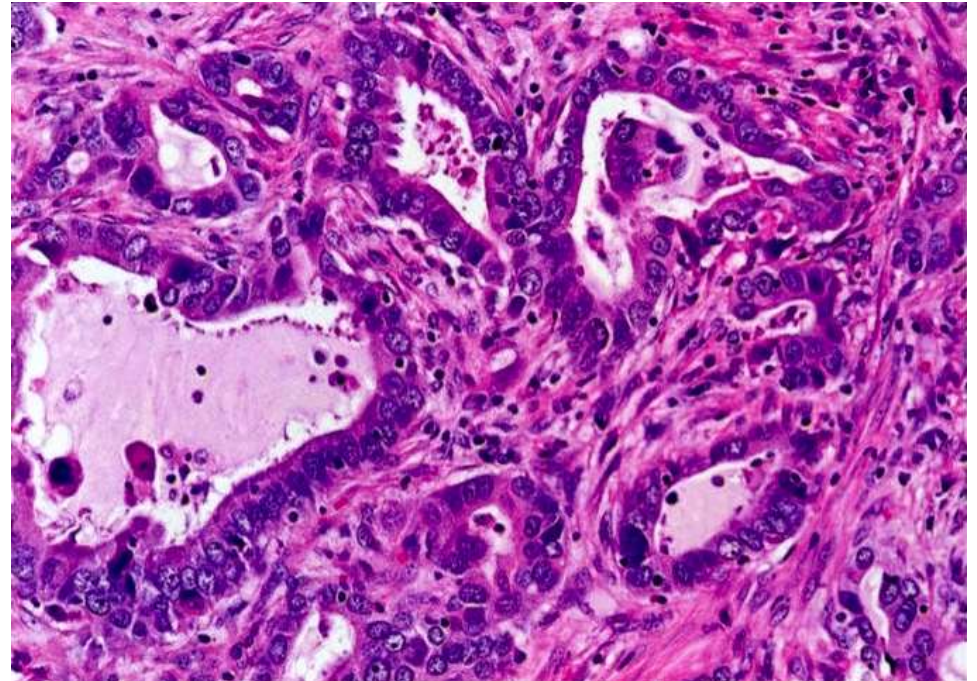
Keratin pearl

Malignant squamous cells

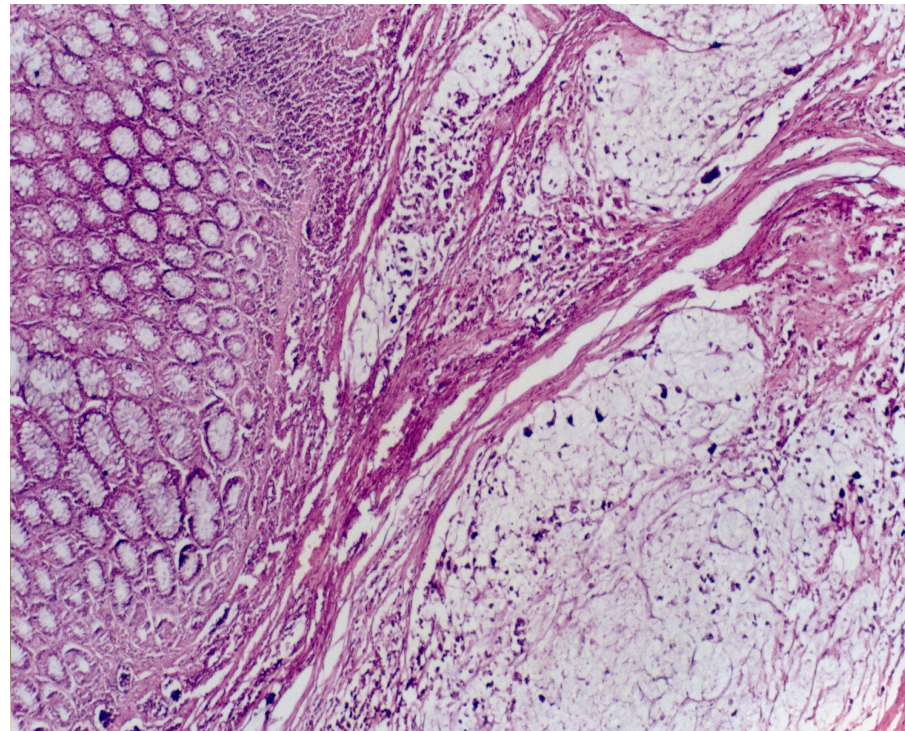
- Colon
- The colon shows a malignant ulcer with raised everted edge, rough necrotic floor and indurated base.
- Ulcerative (adenocarcinoma) carcinoma, colon.



- Colonic mass
- Section in colonic mass showing a malignant tumor formed of irregular variable sized acini lined by malignant epithelial columnar cells. Some acini are angulated, others are fused.
- Colonic adenocarcinoma.



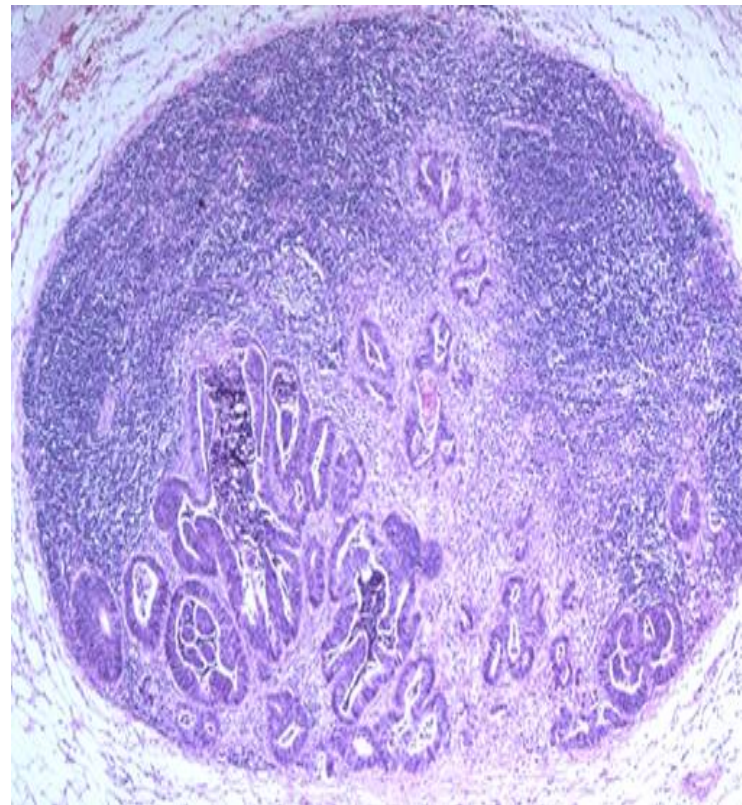
- Colonic mass
- Section in colonic mass showing a malignant tumor formed of pools of extracellular mucin holding few irregular variable sized acini and signet ring cells.
- Muroid adenocarcinoma, colon.



- Breast mass
- Section in breast showing an ill defined non capsulated mass with firm grey white c/s with hemorrhage and necrosis.
- Infiltrating duct carcinoma of the breast.



- Lymph node
- Section in lymph node showing a malignant growth formed of irregular variable sized acini lined by malignant epithelial columnar cells. Some acini are angulated, others are fused.
- Metastatic adenocarcinoma, lymph node



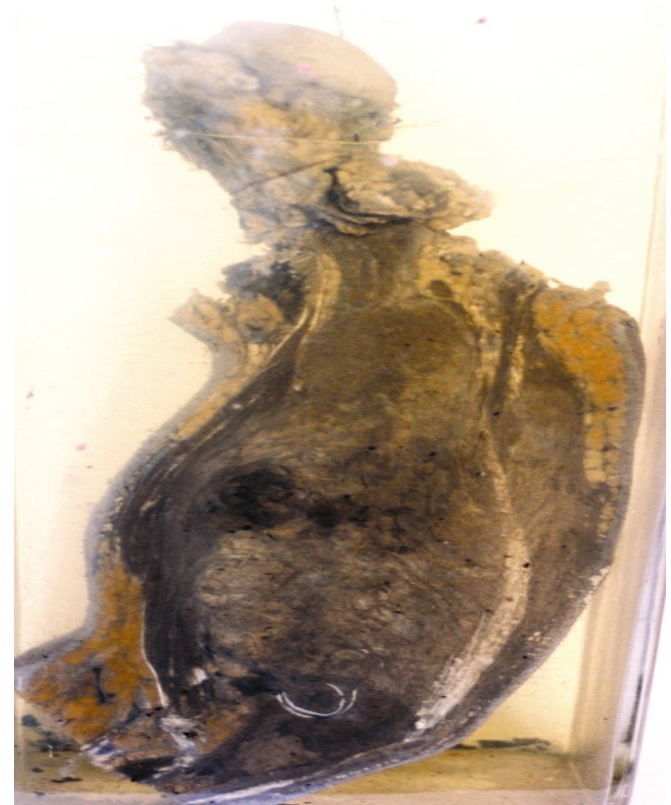
- Lung
- Section in lung showing multiple variable sized tan colored tumor nodules.
- Lung metastasis.

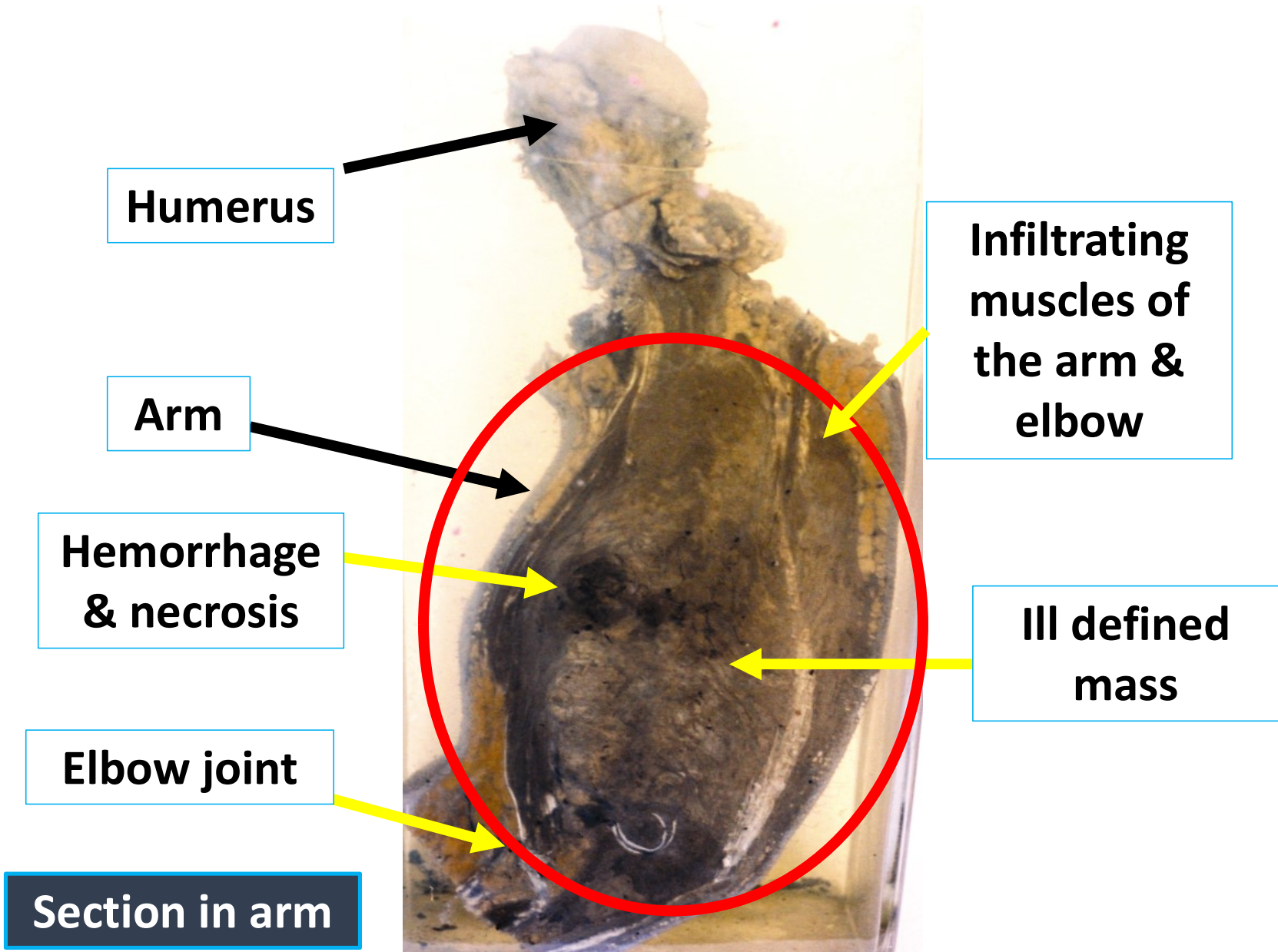


# 3-Malignant mesenchymal tumors



- Arm
- The humerus is destroyed and replaced by an ill defined non capsulated mass with fleshy pink c/s showing hemorrhage and necrosis. The mass infiltrates the surrounding muscles and soft tissue.
- Osteosarcoma, humerus





Humerus

Arm

Hemorrhage  
& necrosis

Elbow joint

Section in arm

Infiltrating  
muscles of  
the arm &  
elbow

Ill defined  
mass



Test yourself





